

INSTALLATION, OPERATION and MAINTENANCE INSTRUCTIONS FOR

Sanfire 40 Sanitary Incinerator

Catalogue Number: HE6820

PLEASE RETAIN THIS LEAFLET FOR FUTURE MAINTENANCE

INSTALLATION

Unpack and dismantle the unit as follows:-

- Remove the ash drawer
- Remove the two fixing screws on the inner top edge of the charging door (C Fig 4)
- Slide the charging door outer plate upwards and remove.
- Remove the 4 cover fixing screws. The cover will then be released and can be detached by sliding forward.

The incinerator should be positioned with the top of the unit 1.22 m from floor level and secured by three No 12 wood screws. Keyhole slots are provided in the fixing lugs. Dimensions of the fixing points are given in Fig 1.

To allow the unit to be removed or to be installed when the flue is already in position, a clearance of 9.5 mm must be left between the lower end of the flue and the top of the incinerator so that the unit can be raised sufficiently above its normal position to allow the fixing screw heads to come out of the keyhole slots in the fixing lugs. Dimensions given in Fig 1 allow an appropriate clearance between the bottom of the flue and the top of the unit. To fix the unit, insert the screws so that the heads are about 6 mm from the wall. Suspend the unit by means of lugs provided on the three wall fixing screws. During this operation the flue should be inserted into the socket of the incinerator. When in position tighten the screws firmly. When installed, the incinerator will stand away from the wall leaving a 13 mm gap. This gap must not be obstructed as it is for ventilation purposes.

Dimensions
In mm

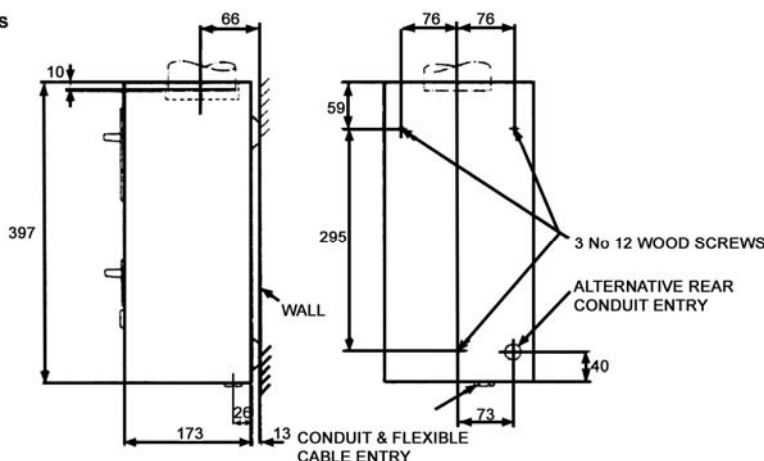


Fig 1

Single Flues

- The incinerator should be sited in a position which eliminates inclined flue runs as far as possible.
- The Sanfire 40 accepts 76.2 mm i.d. flue piping, the first 600 mm of which we recommend you use our HE6767 600 mm flue. From this, our flue adaptor HE6768 should be used to enable connection to a 3" (76 mm) flue. The remaining lengths and accessories should be in a light gauge aluminium or fibre cement.
- In changing direction use bends with a minimum angle of 120° fitted with cleaning doors. In straight runs, pipes fitted with cleaning doors should be provided as necessary for maintenance purposes. Regular cleaning of flues is essential.
- To minimise the possibility of down draughts, a vertical flue length of 2.7 m or more is recommended.
- The flue should be taken above the eaves of the building or surrounding structures. Externally the flue should be stood off the wall to clear eaves or coping and, if necessary, should be taken through such a projection to avoid bends near the flue termination. The installation should be completed with a suitable cowl.
- All flue connections should be carefully sealed including the joint on the socket of the incinerator.
- Where a long inclined or any horizontal flue run is unavoidable ask for details of a suitable fan to assist ventilation.

Common Flues

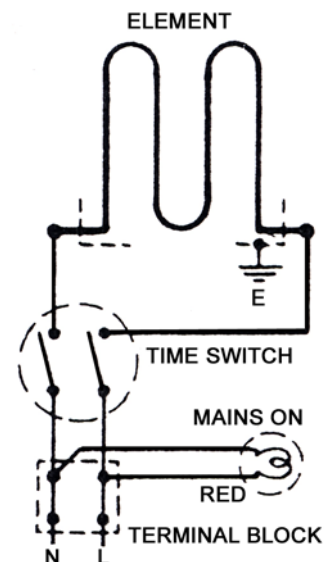
Sanfire incinerators can be easily connected to common flues and used in mechanically ventilated toilets provided that forced extraction is incorporated in the main stack. For guidance on design, details of fittings and fan requirements for common flues, ask for Advisory Leaflet HLT/1041.

NB

When designing flue systems attention should always be given to the relevant British Standards and BS Codes of Practice for Building and Flues, also to the Building Regulations.

Electrical Connections

- The Sanfire 40 is suitable for connecting to a 220/240 volts single phase AC supply (for other voltages, ask for technical information).
- The unit is rated 550 watts at 230 volts.
- A separate 5 amp fuse must be provided in the supply wiring to the unit.



- An entry is provided at the rear of the unit for connection of 20 mm conduit or a small BESA box mounted in the wall behind the unit. An alternative 20 mm conduit entry and a cable clamp for connection by flexible cable are also provided in the base of the unit. These positions are shown in Fig 1.
- Connect the mains leads to the terminals as shown in Fig 2.

- f) Earthing. The earth terminal is adjacent to the terminal block and is clearly marked with the symbol \star . For safety reasons, a sound earth connection **MUST ALWAYS** be made for the unit before it is put in use.
- g) The unit should be wired to an adjacent switch socket in accordance with IEE Regulations for the Electrical Equipment of Buildings.

Operation

Insert the towel by fully opening the door flap at the top of the unit. This operation is all that is required and automatically starts the burning cycle. Do not fill above the lower level of the door opening.

NOTE: The time switch will cut out 20 minutes after the door is closed but the charge will continue to burn.

Maintenance

The ash drawer must not be allowed to overflow. If the incinerator is in constant use it should be emptied weekly or more often if it should appear necessary.

ALWAYS ENSURE THAT THE MAIN EXTERNAL ELECTRICITY SUPPLY IS SWITCHED OFF BEFORE ATTENDING TO SERVICING OF THE UNIT.

To replace the heating element Cat No: HE6821

- a) Dismantle the unit as described under installation paras (a) to (d).
- b) Remove the screws at the ends of the element mounting plate, also the hinge rod.

- c) Disconnect the electrical connections.
- d) The element complete with mounting place can now be removed, lifting the charging door to allow clearance.
- e) Fit the new element to the mounting plate and re-assemble in the reverse order ensuring the element is located between the element guard rods.

To replace the Element Guard

- a) Remove the heating element as previously described.
- b) Pull the charging door forwards and downwards, clear of the ash pan support tray.
- c) Spring front edges of the combustion chamber outwards and slip the guard rods out of locating holes. The element guard can then be removed from the unit.
- d) Replace the element guard and refit in the reverse order.

To replace the time switch Cat No: HE6854

- a) Dismantle the unit as described under installation paragraphs (a) to (d).
- b) Detach the linkage mechanism by releasing the screw fixing to the timer shaft (item D Fig 3).
- c) Remove the two timer fixing screws.
- d) Disconnect the push-on connections, remove and replace the timer.
- e) Reassemble in the reverse order, ensuring that the spacing bush is fitted between the mounting plate and the linkage. **NB** It is essential that the short arm of the linkage engages with the 'L' section of Item D Fig 3 and that the link is in the position shown when the timer is in the 'Off' position.

Electrical Spares

Ref No Description Part No
(see Fig 3)

A	Heating Element	HE6821
B	Time Switch	HE6854

Spares

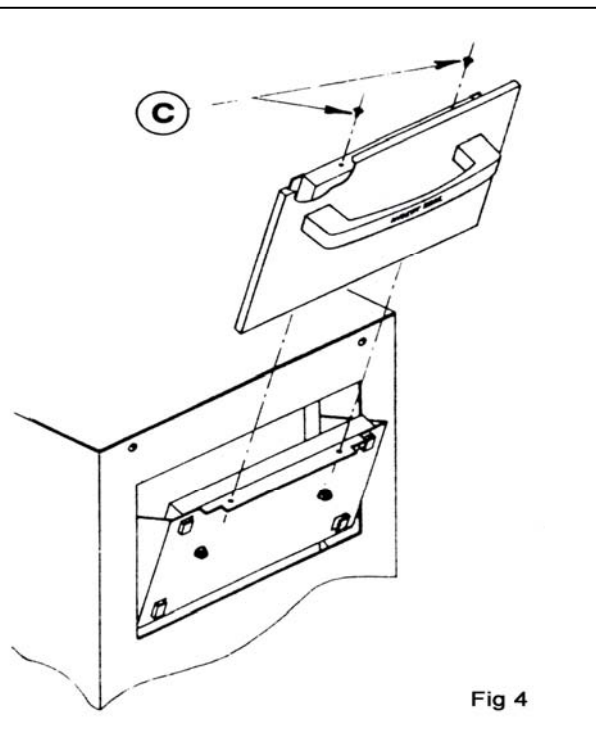
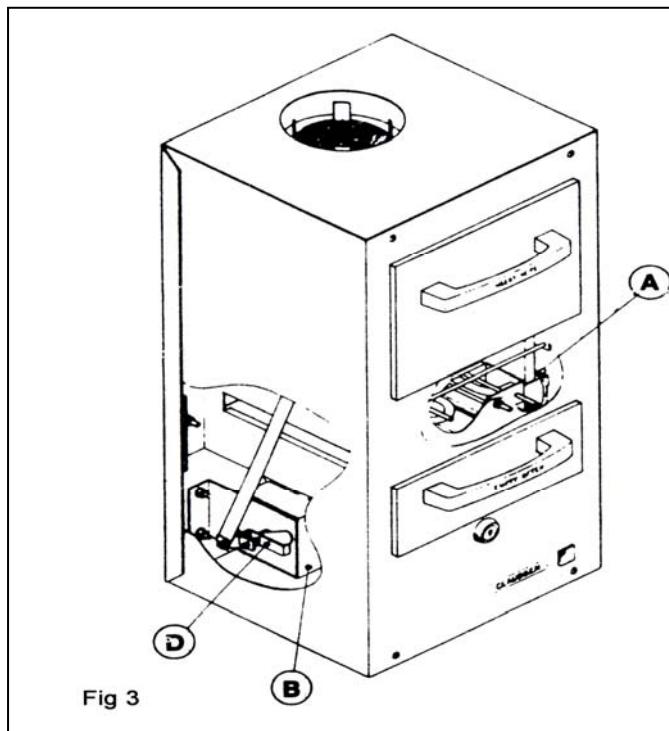
It is essential when ordering spares or replacement parts to state 'for HE6820 Sanfire 40 Sanitary Incinerator' and to quote the serial number of the incinerator. This number is stamped on the rating plate.

SPECIAL NOTICE

This appliance is fitted with a sheathed wire element and it is a feature of such an element that a small amount of moisture can be absorbed from the atmosphere during storage, or even after installation if not in regular use.

In certain cases, it is possible that moisture may be absorbed to such a degree as to decrease the earth leakage resistance such that the appliance would cause spurious operation of sensitive earth leakage cut-outs, if these are fitted in the supply circuit.

Should such a condition occur, disconnect the appliance from the circuit and operate for a few minutes in a circuit without earth leakage protection. This will normally drive off the offending moisture and render the appliance suitable for return to the circuit with earth leakage protection. **THIS PROCEDURE MUST ONLY BE CARRIED OUT BY A COMPETENT ELECTRICIAN.** Should any further difficulties be encountered, Cludgen Technical Department should be consulted.



In the interest of progress the Company reserves the right to vary specifications from time to time without notice. The material listed is offered subject to the Company's General Conditions of Sale, a copy of which may be obtained upon request.